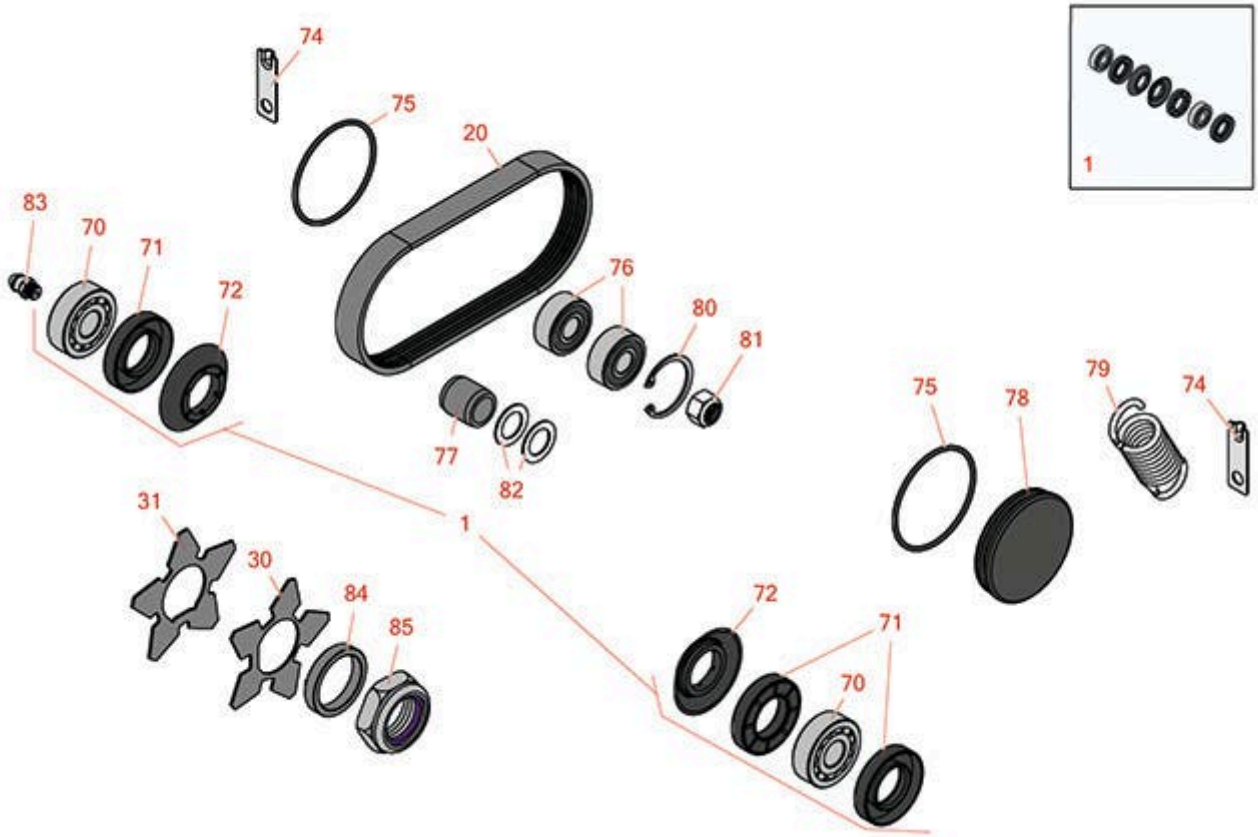




# Replaces Toro Reelmaster 5210-D Parts

Cutting Unit with 5" Reels - Models 03621, 03623, 03634 & 03635

Groomer



All original equipment manufacturers names and part numbers are used for identification purposes only, and we are in no way implying that our products are original equipment parts. Prices subject to change without notice.



# Replaces Toro Reelmaster 5210-D Parts

Cutting Unit with 5" Reels - Models 03621, 03623, 03634 & 03635

Groomer



Item No	R&R Part No.	OEM Part No.	Description	Qty Req	Order Quantity
<b>Overhaul Kits</b>					
1	<b>R131-3233</b>	131-3233	Groomer/Rrb Seal Kit	1	
<b>Belts</b>					
20	<b>R108-4497</b>	108-4497	Belt- Groomer	1	
<b>Blades</b>					
30	<b>R112-6963</b>	112-6963	Blade - Groomer	40	
31	<b>R130-4105</b>	130-4105	Blade- Groomer	40	
<b>Other Parts Available</b>					
70	<b>R95-0707</b>	95-0707	Bearing - Self Aligning	2	
71	<b>R106-8530</b>	106-8530	Seal - Oil	2	
72	<b>R108-4172</b>	108-4172	Seal - Excluder	2	
74	<b>R104-4754</b>	104-4754	Spring-Detent	2	
75	<b>R112-6968</b>	112-6968	O-Ring	2	
76	<b>R110-1701</b>	110-1701	Bearing	2	
77	<b>R108-4491</b>	108-4491	Spacer - Hardened	1	
78	<b>R105-5761</b>	105-5761	Grommet	1	
79	<b>R110-1700</b>	110-1700, 66-4460	Spring-Extension	1	
80	<b>R32151-60</b>	32151-60	Ring - Snap	1	
81	<b>R3296-47</b>	3296-47	Locknut - 5/16-18 Jam Nyloc	1	
82	<b>R112-6957</b>	112-6957	Washer - Hardened	2	

All original equipment manufacturers names and part numbers are used for identification purposes only, and we are in no way implying that our products are original equipment parts. Prices subject to change without notice.



# Replaces Toro Reelmaster 5210-D Parts

Cutting Unit with 5" Reels - Models 03621, 03623, 03634 & 03635

Groomer



Item No	R&R Part No.	OEM Part No.	Description	Qty Req	Order Quantity
83	<b>R302-5</b>	21-6010, 302-11, 302-37, 302-47, 302-5, 302-57, 302-58, 302-6, 31-0300, 32-9660, 60-0800, 62-3880, 92-4181	Fitting - Grease	1	
84	<b>R70-1350</b>	70-1350	Spacer - 1/4 Fits Groomer Shaft	2	
85	<b>R32127-46</b>	32127-46, 3296-60	Locknut	2	

All original equipment manufacturers names and part numbers are used for identification purposes only, and we are in no way implying that our products are original equipment parts. Prices subject to change without notice.