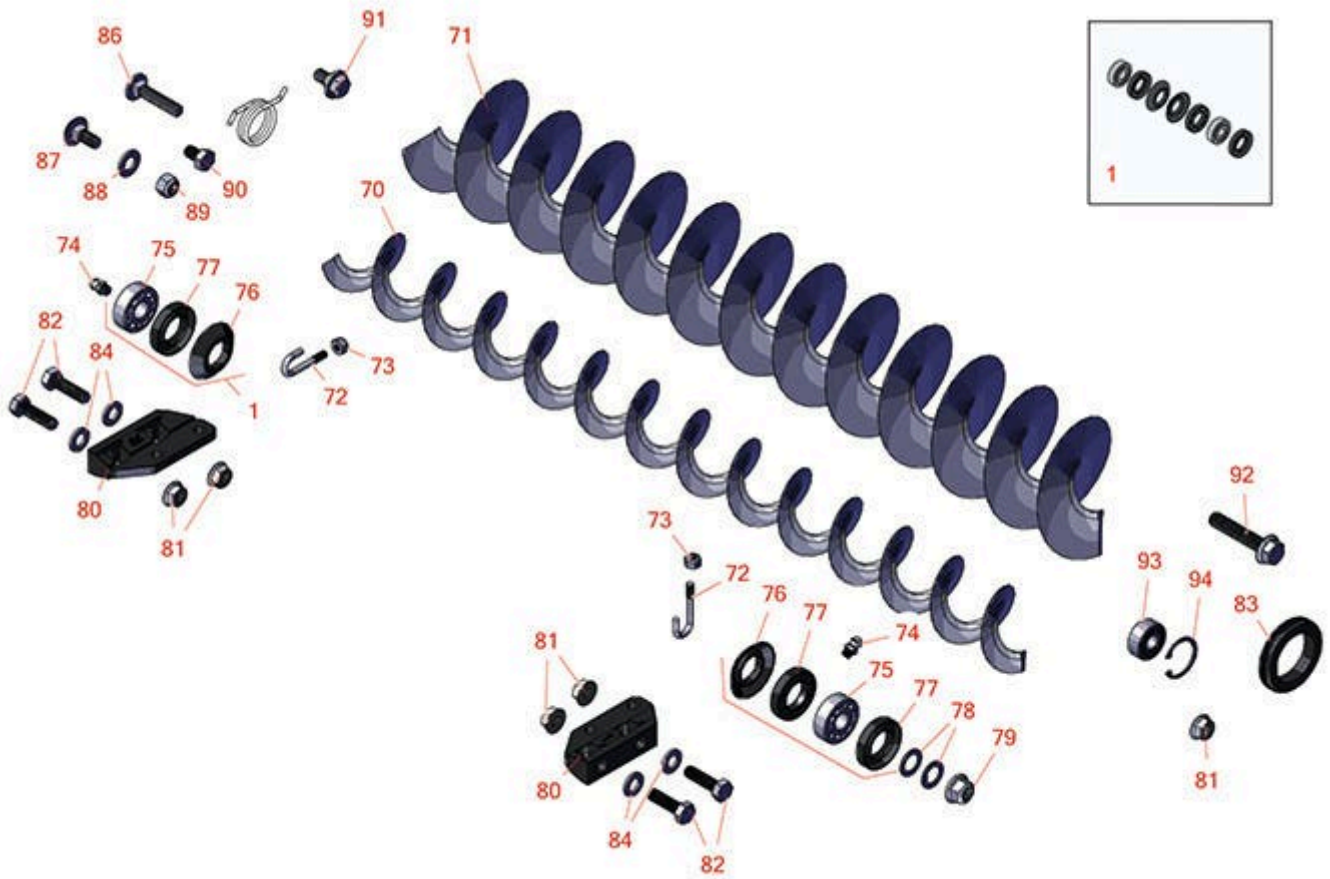




# Replaces Toro Reelmaster 5210-D Parts

Cutting Unit with 5" Reels - Models 03621, 03623, 03634 & 03635

Rear Roller Brush



All original equipment manufacturers names and part numbers are used for identification purposes only, and we are in no way implying that our products are original equipment parts. Prices subject to change without notice.



# Replaces Toro Reelmaster 5210-D Parts

Cutting Unit with 5" Reels - Models 03621, 03623, 03634 & 03635

Rear Roller Brush



Item No	R&R Part No.	OEM Part No.	Description	Qty Req	Order Quantity
<b>Overhaul Kit</b>					
1	<b>R131-3233</b>	131-3233	Groomer/Rrb Seal Kit	1	
<b>Other Parts Available</b>					
70	<b>R108-4193</b>	108-4193	Brush - Roller - 2 OD	5	
71	<b>R110-1740</b>	110-1740	Brush-Roller (High HOC) 3.5 in OD	5	
72	<b>R105-9632</b>	105-9632	Bolt - J	10	
73	<b>R3296-2</b>	32127-10, 3296-2, 9157404	Nut - #10 Lock	10	
74	<b>R302-5</b>	21-6010, 302-11, 302-37, 302-47, 302-5, 302-57, 302-58, 302-6, 31-0300, 32-9660, 60-0800, 62-3880, 92-4181	Fitting - Grease	10	
75	<b>R95-0707</b>	95-0707	Bearing - Self Aligning	10	
76	<b>R108-4172</b>	108-4172	Seal - Excluder	10	
77	<b>R106-8530</b>	106-8530	Seal - Oil	15	
78	<b>R112-6957</b>	112-6957	Washer - Hardened	10	
79	<b>R104-8301</b>	104-8301, 104-9301, 109-6658, 133-7570	Locknut - 3/8-16 Nylon Flanged	5	
80	<b>R108-4480</b>	108-4480	Bracket - Rear Roller Brush	10	

All original equipment manufacturers names and part numbers are used for identification purposes only, and we are in no way implying that our products are original equipment parts. Prices subject to change without notice.



# Replaces Toro Reelmaster 5210-D Parts

Cutting Unit with 5" Reels - Models 03621, 03623, 03634 & 03635

Rear Roller Brush



Item No	R&R Part No.	OEM Part No.	Description	Qty Req	Order Quantity
81	<b>R104-8300</b>	104-8300, 104-8300 , 119-4041	Locknut - 5/16-18 Flanged Y/Zinc	20	
82	<b>R322-16</b>	322-16, Apr-00	Bolt - Hex HD 5/16-18 x 1-1/8	20	
83	<b>R240-7</b>	240-7	Grommet - Rubber - 2 in OD	5	
84	<b>R94-6936</b>	94-6936, 94-9236	Washer - Hardened - 5/16 SAE	20	
86	<b>R112-6950</b>	112-6950, 3230-27	Bolt - Carriage 5/16-18 x 1-1/2	15	
87	<b>R3230-23</b>	3230-23, Mar-61	Bolt - 5/16-18x3/4 - Carriage	10	
88	<b>R3256-45</b>	3256-45	Washer - Flat .733 x .381 x .058 YZ	20	
89	<b>R3296-47</b>	3296-47	Locknut - 5/16-18 Jam Nyloc	30	
90	<b>R322-1</b>	01-178-0504, 20-22-AD, 20-22-AGD, 322-1, 513337	Bolt - Hex HD 5/16-18 x 1/2	10	
91	<b>R27-0411</b>	27-0411	Bolt - Shoulder	5	
92	<b>R66-9302</b>	3234-20, 66-9302	Screw - HHF, Whiz	5	
93	<b>R110-1701</b>	110-1701	Bearing	5	
94	<b>R32151-60</b>	32151-60	Ring - Snap	5	

All original equipment manufacturers names and part numbers are used for identification purposes only, and we are in no way implying that our products are original equipment parts. Prices subject to change without notice.