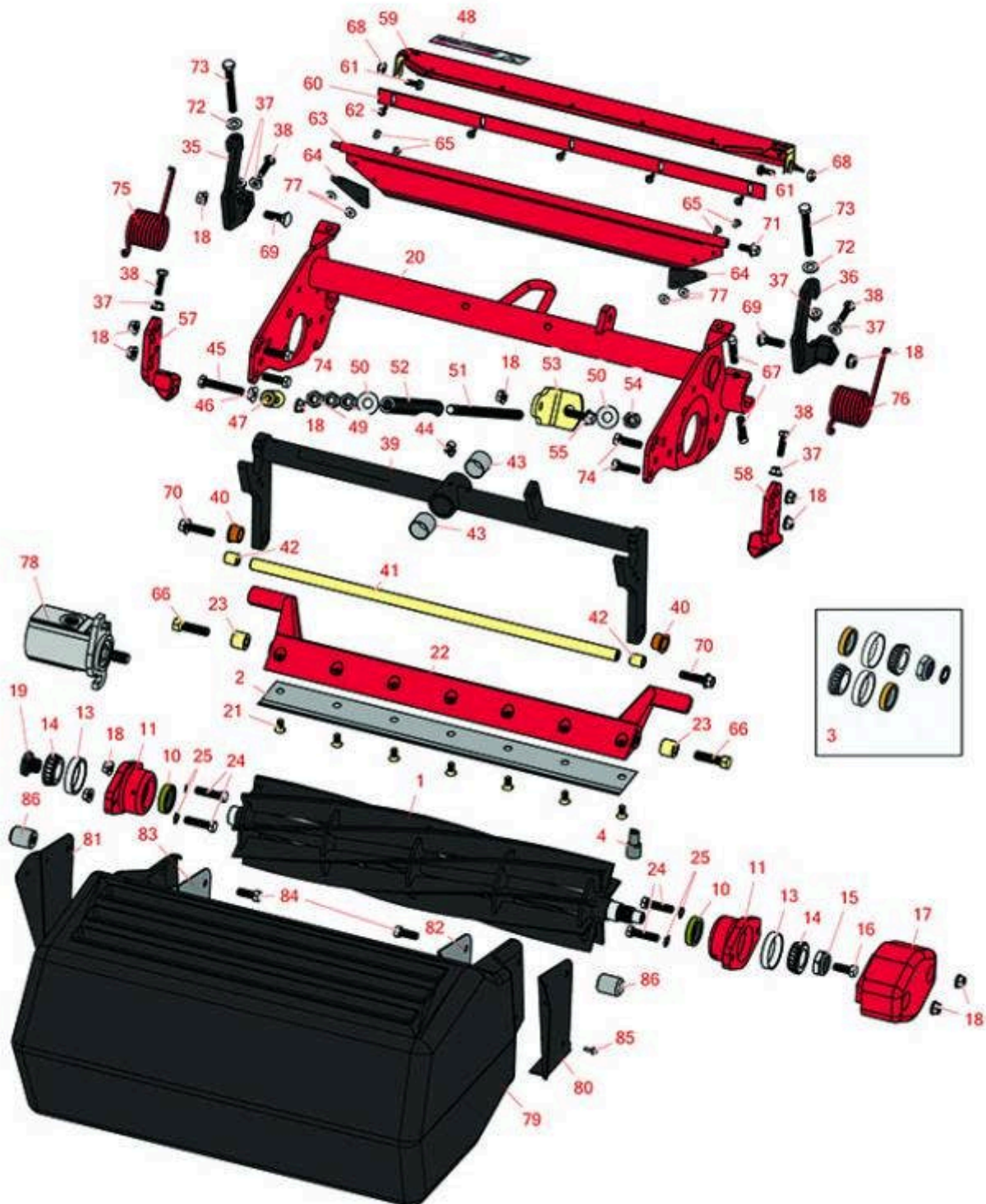




# Replaces Toro Reelmaster 5400D Parts

Cutting Unit - Model 03527 & 03528  
Reel & Bedknife



All original equipment manufacturers names and part numbers are used for identification purposes only, and we are in no way implying that our products are original equipment parts. Prices subject to change without notice.



# Replaces Toro Reelmaster 5400D Parts

Cutting Unit - Model 03527 & 03528  
Reel & Bedknife



Item No	R&R Part No.	OEM Part No.	Description	Qty Req	Order Quantity
<b>R&amp;R Reels, Lifetime Guaranteed</b>					
1	<b>R14-0659</b>	14-0659, 57-5300	Reel - 5 Blade Heavy Duty	1	
1	<b>R14-0649</b>	14-0649	Reel - 8 Blade Heavy Duty	1	
<b>R&amp;R Bedknives, Lifetime Guaranteed</b>					
2	<b>R100-3350</b>	100-3350	Bedknife - High Cut	1	
2	<b>R63-8610</b>	63-8610	Bedknife - Fairway Cut .375 - 1.00 HOC	1	
<b>Overhaul Kits</b>					
3	<b>R107-1590</b>	107-1590	Overhaul Kit - Cutting Unit	0	
<i>Tech Note: Includes 2 ea.: R253-96 Seals, R254-72 Bearing Cups, R254-94 Bearings; 1 ea.: R253-61 Seal &amp; R32127-46 Locknut:</i>					
<b>Service Tools</b>					
4	<b>R51-0880</b>	51-0880	Bedknife Screw Driver Tool	0	
<b>Other Parts Available</b>					
10	<b>R104-3388</b>	104-3388	Seal - Double Lip Bearing Housing	2	
11	<b>R104-3399</b>	104-3399	Housing Assy - Bearing Reel	2	
13	<b>R254-72</b>	01-103-0050, 01-103-0120, 01-103-0140, 1-543508, 254-71, 254-72, 40439, 62-3340, 99-4511	Cup - Bearing	2	

All original equipment manufacturers names and part numbers are used for identification purposes only, and we are in no way implying that our products are original equipment parts. Prices subject to change without notice.



# Replaces Toro Reelmaster 5400D Parts

Cutting Unit - Model 03527 & 03528

Reel & Bedknife



Item No	R&R Part No.	OEM Part No.	Description	Qty Req	Order Quantity
14	<b>R254-94</b>	1-543509, 254-94, 32-8090, 32-8240, 32-9640, 40440, 62-3330	Tapered Bearing Cone	2	
15	<b>R32127-46</b>	32127-46, 3296-60	Locknut	1	
16	<b>R323-2</b>	01-178-0604, 323-2	Bolt - Hex HD 3/8-16 x 1	1	
17	<b>R100-7113-01</b>	100-7113-01	Counterweight	1	
18	<b>R3296-39</b>	32127-25, 32128-36, 3290-357, 3296-17, 3296-22, 3296-39, 915663P, 99-7443	Locknut - 3/8-16 Nylon	12	
19	<b>R93-1394</b>	93-1394	Nut - Splined RH Thrd .812 Long	1	
20	<b>R100-7140</b>	100-7140	Frame Assy	1	
21	<b>R150476</b>	3-3816, 3-6462, 52-4910, 57-4910	Screw - Bedknife 5/16-18 x 5/8	7	
21	<b>R150475</b>	3-6462, 3-6642	Screw - Bedknife Stainless 5/16-18 x 5/8	7	
<i>Tech Note: Pre-Packaged in bags of 50:</i>					
22	<b>R100-7124-01</b>	100-7124-01	Bed Bar - 7 Hole	1	
23	<b>R100-7123</b>	100-7123	Spacer - Bed Bar	2	
24	<b>R3290-316</b>	3290-316, 57-3210	Bolt - Hex Tap 3/8-16 x 1-1/2	4	

All original equipment manufacturers names and part numbers are used for identification purposes only, and we are in no way implying that our products are original equipment parts. Prices subject to change without notice.



# Replaces Toro Reelmaster 5400D Parts

Cutting Unit - Model 03527 & 03528

Reel & Bedknife



Item No	R&R Part No.	OEM Part No.	Description	Qty Req	Order Quantity
25	<b>R3255-9</b>	3255-9	Washer - Lock 3/8 Ext. Star	4	
35	<b>R100-7105</b>	100-7105, 100-7105-01	Bracket - RH HOC Rear Roller	1	
36	<b>R100-7106</b>	100-7106, 100-7106-01	Bracket - LH HOC Rear Roller	1	
37	<b>R445722</b>	30-8980, 32128-2, 32128-20, 32128-20, 445722	Nut - Serrated Washer	4	
38	<b>R322-16</b>	322-16, Apr-00	Bolt - Hex HD 5/16-18 x 1-1/8	4	
39	<b>R104-3357</b>	104-3357	Carrier Frame Assy	1	
40	<b>R3-1506</b>	3-1506, 75-2160, Apr-50	Bushing - Bronze	2	
41	<b>R104-3365</b>	104-3365	Support Rod	1	
42	<b>R104-3366</b>	104-3366	Spacer - Hardened - Support Rod	2	
43	<b>R67-1750</b>	67-1750	Bushing - 1 Long	2	
44	<b>R302-60</b>	302-60	Zerk - Grease 90 Deg.	1	
45	<b>R104-3396</b>	104-3396	Bolt - Hex HD 3/8-16 x 2-1/4	1	
46	<b>R32128-43</b>	30-8990, 32128-43, 3290-357	Nut - Flanged Whiz - 3/8-16	1	
47	<b>R99-8662</b>	99-8662	Tube - Spring	1	
48	<b>R67-7960</b>	27-2890, 62-5070, 67-7960	Decal - Warning	1	

All original equipment manufacturers names and part numbers are used for identification purposes only, and we are in no way implying that our products are original equipment parts. Prices subject to change without notice.



# Replaces Toro Reelmaster 5400D Parts

Cutting Unit - Model 03527 & 03528

Reel & Bedknife



Item No	R&R Part No.	OEM Part No.	Description	Qty Req	Order Quantity
49	<b>R443818</b>	01-191-0813, 3218-18, 3218-5, 3248-18	Nut - 1/2-13 Hex Jam Zinc	3	
50	<b>R453017</b>	01-166-0050, 01-166-0240, 01-166-0800, 24-13-AD, 24-14-AD, 32-8110, 3256-26, 3256-6, 453017, 69-8980, 87-7270	Washer - Flat 1/2	2	
51	<b>R104-3355</b>	104-3355	Rod - Spring	1	
52	<b>R104-3394</b>	104-3394	Spring - Compression	1	
53	<b>R104-3661</b>	104-3661	Bracket - Spring	1	
54	<b>RF5003</b>	32127-29, 32131-5, 32132-5, 3296-23	Locknut - ESNA 1/2-13	1	
55	<b>R3234-24</b>	3234-24, 3234-8, 66-9301	Bolt - Hex Ser Was HD 3/8-16 x 1-1/4	1	
57	<b>R104-3373-01</b>	104-3373-01	Bracket - RH HOC Front Roller	1	
58	<b>R104-3375-01</b>	104-3375-01	Bracket - LH HOC Front Roller	1	
59	<b>R100-4181</b>	100-4181	Shield Assy	1	
60	<b>R36-7260</b>	36-7260	Bar - Cut Off Grass Shield	1	
61	<b>R3234-4</b>	3234-4	Bolt - Hx Ser Was HD 1/4-20 x 3/4	2	
62	<b>R32144-73</b>	104-2065, 32144-73	Screw - Machine Hex Washer Head	5	

All original equipment manufacturers names and part numbers are used for identification purposes only, and we are in no way implying that our products are original equipment parts. Prices subject to change without notice.



# Replaces Toro Reelmaster 5400D Parts

Cutting Unit - Model 03527 & 03528

Reel & Bedknife



Item No	R&R Part No.	OEM Part No.	Description	Qty Req	Order Quantity
63	<b>R100-7136</b>	100-7136	Rear Shield Assy	1	
64	<b>R75-1720</b>	75-1720	Flap - Rubber Rear Deflector	2	
65	<b>R700382</b>	700382	Rivet - Guard	4	
66	<b>R100-7126</b>	100-7126	Bolt - Wheel 7/16-20 x 1-1/2 GR5	2	
67	<b>R104-8216</b>	104-8216	Screw - Sq HD Set 3/8-24 x 1-1/2	4	
68	<b>R301504</b>	2296-42, 301504, 32127-24, 32128-33, 32146-17, 3296-16, 3296-42, 3296-42 , 915661P	Locknut - ESNA 1/4-20	2	
69	<b>R3231-25</b>	01-173-0610, 30-9970, 3231-25, 3231-3, 900064P	Bolt - Carriage 3/8-16 x 1-1/4	2	
70	<b>R3234-19</b>	3234-19	Bolt - Hex Washer 3/8-16x1-3/4	2	
71	<b>R3234-5</b>	3234-5, 62-3310	Bolt - 5/16-18x3/4 Hx Ser Was HD	2	

All original equipment manufacturers names and part numbers are used for identification purposes only, and we are in no way implying that our products are original equipment parts. Prices subject to change without notice.



# Replaces Toro Reelmaster 5400D Parts

Cutting Unit - Model 03527 & 03528

Reel & Bedknife



Item No	R&R Part No.	OEM Part No.	Description	Qty Req	Order Quantity
72	<b>R453011</b>	01-166-0100, 01-166-0120, 01-166-0270, 01-166-0500, 01-166-0600, 01-166-0620, 132-4593, 2356-3, 237-12, 24-10-AD, 24-11-AD, 24-11-BD, 24-12-AD, 24-12-BD, 30-9310, 32-8190, 3256-24, 3256-3, 3256-36, 3256-4, 453011, 47-9950, 48-9220, 513458, 7-0052	Washer - Flat 3/8 SAE Y/Zinc	2	
73	<b>R323-49</b>	323-49	Bolt - HOC 3/8-16 x 3 1/2	2	
74	<b>R400264</b>	01-150-0180, 01-178-0610, 20-48-AD, 20-48-AGD, 32-9160, 3224-3, 323-29, 323-7, 400264, 908035P	Bolt - Hex HD 3/8-16 x 1-1/4	4	
75	<b>R83-4720-01</b>	83-4720-01	Torsion Spring - RH	1	
76	<b>R83-4730-01</b>	83-4730-01	Torsion Spring - LH	1	
77	<b>R3256-49</b>	3256-49	Washer - Flat 3/16x9/16x18GA	4	

All original equipment manufacturers names and part numbers are used for identification purposes only, and we are in no way implying that our products are original equipment parts. Prices subject to change without notice.



# Replaces Toro Reelmaster 5400D Parts

Cutting Unit - Model 03527 & 03528

Reel & Bedknife



Item No	R&R Part No.	OEM Part No.	Description	Qty Req	Order Quantity
78	<b>R120-2072</b>	100-6426, 108-6487, 112-9200, 120-2072, 93-1375	Hydraulic Gear Motor	1	
79	<b>R75-4010</b>	104-8219, 75-4010	Grass Basket	1	
80	<b>R75-4040</b>	75-4040	Support - Outer LH	1	
81	<b>R75-4050</b>	75-4050	Support - RH Outer	1	
82	<b>R75-4030</b>	75-4030	Support - Inner LH	1	
83	<b>R75-4020</b>	75-4020	Support - RH Inner	1	
84	<b>R323-6</b>	01-150-0010, 01-178-0608, 20-47-AD, 20-47-AGD, 3224-2, 323-6, 49-3510, 908034P, 908332	Bolt - Hex HD 3/8-16 x 1 GR5 YZ	2	
85	<b>R3269-28</b>	3269-28	Rivet - Pop Grass Basket	10	
86	<b>R75-3930</b>	75-3930	Pin - Grass Basket	2	

All original equipment manufacturers names and part numbers are used for identification purposes only, and we are in no way implying that our products are original equipment parts. Prices subject to change without notice.