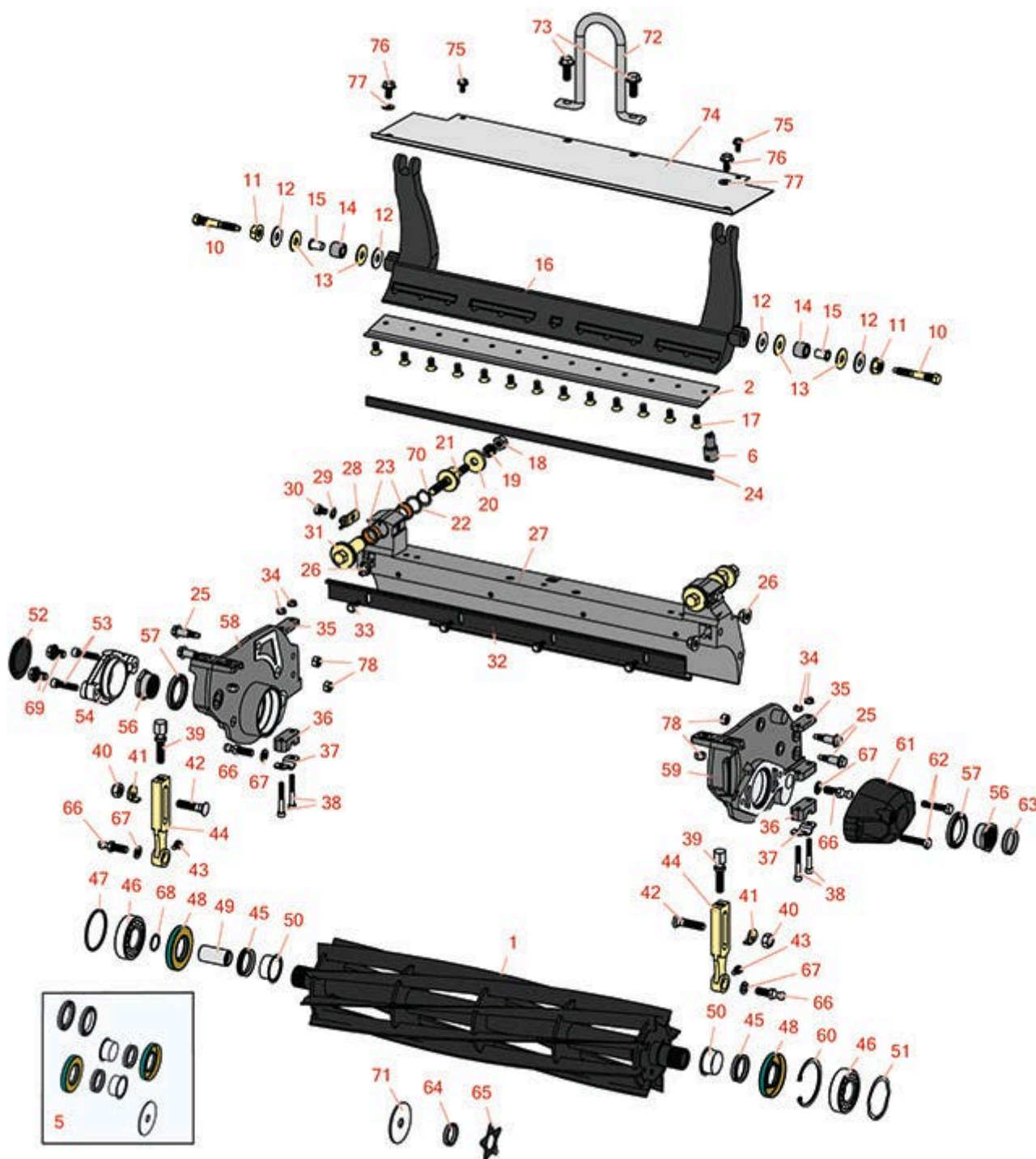




# Replaces R&R Products Greens Max 2200D Parts

Dual Adjust Cutting Unit  
Reel & Bedknife



All original equipment manufacturers names and part numbers are used for identification purposes only, and we are in no way implying that our products are original equipment parts. Prices subject to change without notice.



# Replaces R&R Products Greens Max 2200D Parts

Dual Adjust Cutting Unit  
Reel & Bedknife



Item No	R&R Part No.	OEM Part No.	Description	Qty Req	Order Quantity
---------	--------------	--------------	-------------	---------	----------------

1	R150748		Reel - 14 Blade Razor Series Low Drag 21	1	
---	---------	--	---	---	--

*Detail Description: R&R Razor Reels are manufactured from a special high alloy steel and then hardened to RC48-51 to match the temper of our Razor bedknives and original equipment premium series bedknives. All R&R Reels are cylindrically ground on bearing surfaces, relief ground and precision computer balanced for extended bearing and reel life. R&R Products Reels are guaranteed against defects in material and workmanship for the life of the reel under normal use. You can expect up to double the life from Razor reels over standard reels.:*

## R&R Reels, Lifetime Guaranteed

1	R115-5370	R150175	Reel - 14 Blade	1	
---	-----------	---------	-----------------	---	--

*Detail Description: R&R Reel blades are manufactured from high carbon-boron alloy steel and then hardened to RC46-49 to match the temper of our bedknives and original equipment bedknives. All R&R Reels are cylindrically ground on bearing surfaces and then relief ground. Reels are then precision computer balanced for extended bearing and reel life. R&R Products Reels are guaranteed against defects in material and workmanship for the life of the reel under normal use.:*

1	R105-5792		Reel - 11 Blade	1	
---	-----------	--	-----------------	---	--

*Detail Description: R&R Reel blades are manufactured from high carbon-boron alloy steel and then hardened to RC46-49 to match the temper of our bedknives and original equipment bedknives. All R&R Reels are cylindrically ground on bearing surfaces and then relief ground. Reels are then precision computer balanced for extended bearing and reel life. R&R Products Reels are guaranteed against defects in material and workmanship for the life of the reel under normal use.:*

1	R105-5793		Reel - 8 Blade	1	
---	-----------	--	----------------	---	--

*Detail Description: R&R Reel blades are manufactured from high carbon-boron alloy steel and then hardened to RC46-49 to match the temper of our bedknives and original equipment bedknives. All R&R Reels are cylindrically ground on bearing surfaces and then relief ground. Reels are then precision computer balanced for extended bearing and reel life. R&R Products Reels are guaranteed against defects in material and workmanship for the life of the reel under normal use.:*

## R&R Bedknives, Lifetime Guaranteed

2	R150466	R63-8600, R94-6393	Bedknife - Super Thick .312 - 1.00 HOC	1	
---	---------	-----------------------	---	---	--

All original equipment manufacturers names and part numbers are used for identification purposes only, and we are in no way implying that our products are original equipment parts. Prices subject to change without notice.



# Replaces R&R Products Greens Max 2200D Parts

Dual Adjust Cutting Unit  
Reel & Bedknife



Item No	R&R Part No.	OEM Part No.	Description	Qty Req	Order Quantity
---------	--------------	--------------	-------------	---------	----------------

*Detail Description:* R&R Bedknives are manufactured from high carbon-boron alloy steel and then hardened to RC46-49 to match the temper of our reel blades and original equipment reels. Bedknives are surface ground on the top and front edge and straightened three times before being packaged with oil for rust prevention. All R&R Bedknives now have an increased front edge grind for added life. All R&R Bedknives are guaranteed against defects in material and workmanship under normal use for the life of the part.:

2	<b>R94-6392</b>	R57-4970, R62-2500	Bedknife - High Cut .312 - 1.00 HOC	1	
---	-----------------	-----------------------	--	---	--

*Detail Description:* R&R Bedknives are manufactured from high carbon-boron alloy steel and then hardened to RC46-49 to match the temper of our reel blades and original equipment reels. Bedknives are surface ground on the top and front edge and straightened three times before being packaged with oil for rust prevention. All R&R Bedknives now have an increased front edge grind for added life. All R&R Bedknives are guaranteed against defects in material and workmanship under normal use for the life of the part.:

2	<b>R93-4264</b>	R57-4960, R63-8470	Bedknife - Low Cut .187 - 1.00 HOC	1	
---	-----------------	-----------------------	---------------------------------------	---	--

*Detail Description:* R&R Bedknives are manufactured from high carbon-boron alloy steel and then hardened to RC46-49 to match the temper of our reel blades and original equipment reels. Bedknives are surface ground on the top and front edge and straightened three times before being packaged with oil for rust prevention. All R&R Bedknives now have an increased front edge grind for added life. All R&R Bedknives are guaranteed against defects in material and workmanship under normal use for the life of the part.:

2	<b>R93-4262</b>	R62-8250, R65-8250	Bedknife - Micro Cut .062 - .187 HOC	1	
---	-----------------	-----------------------	---	---	--

*Detail Description:* R&R Bedknives are manufactured from high carbon-boron alloy steel and then hardened to RC46-49 to match the temper of our reel blades and original equipment reels. Bedknives are surface ground on the top and front edge and straightened three times before being packaged with oil for rust prevention. All R&R Bedknives now have an increased front edge grind for added life. All R&R Bedknives are guaranteed against defects in material and workmanship under normal use for the life of the part.:

## R&R Razor Tool Steel Bedknives, Lifetime Guaranteed

2	<b>R115-1881</b>		Bedknife - Razor Tool Steel - 21 Tournament Cut .125 - .500 HOC	1	
---	------------------	--	---	---	--

All original equipment manufacturers names and part numbers are used for identification purposes only, and we are in no way implying that our products are original equipment parts. Prices subject to change without notice.



# Replaces R&R Products Greens Max 2200D Parts

Dual Adjust Cutting Unit  
Reel & Bedknife



Item No	R&R Part No.	OEM Part No.	Description	Qty Req	Order Quantity
---------	--------------	--------------	-------------	---------	----------------

*Detail Description:* R&R Razor bedknives are manufactured from premium alloy tool steel steel and then hardened to RC48-51 to match the temper of our Razor reel blades and original equipment premium series reels. Bedknives are surface ground on the top and front edge and specially packaged for rust prevention. All R&R Bedknives now have an increased front edge grind for added life. All R&R Bedknives are guaranteed against defects in material and workmanship under normal use for the life of the part. You can expect up to double the life over standard bedknives.:

2	<b>R115-1880</b>		Bedknife - Razor Tool Steel - 21 Micro Cut .062 - .187 HOC	1	
---	------------------	--	---	---	--

*Detail Description:* R&R Razor bedknives are manufactured from premium alloy tool steel steel and then hardened to RC48-51 to match the temper of our Razor reel blades and original equipment premium series reels. Bedknives are surface ground on the top and front edge and specially packaged for rust prevention. All R&R Bedknives now have an increased front edge grind for added life. All R&R Bedknives are guaranteed against defects in material and workmanship under normal use for the life of the part. You can expect up to double the life over standard bedknives.:

2	<b>R150492</b>		Bedknife - Razor Tool Steel - 21 Micro Cut Ext	1	
---	----------------	--	---	---	--

*Detail Description:* R&R Razor bedknives are manufactured from premium alloy tool steel steel and then hardened to RC48-51 to match the temper of our Razor reel blades and original equipment premium series reels. Bedknives are surface ground on the top and front edge and specially packaged for rust prevention. All R&R Bedknives now have an increased front edge grind for added life. All R&R Bedknives are guaranteed against defects in material and workmanship under normal use for the life of the part. You can expect up to double the life over standard bedknives.:

## Overhaul Kits & Service Tools

5	<b>R106-6937</b>		Kit - Reel Seal	1	
---	------------------	--	-----------------	---	--

*Detail Description:* Includes: 2 ea: R106-6927 Sleeve, R106-6926 Inner Seal, R253-134 Outer Seal, R106-6929 V-Ring; & 1 ea: R104-0532 Washer:

6	<b>R51-0880</b>		Bedknife Screw Driver Tool	0	
---	-----------------	--	----------------------------	---	--

*Detail Description:* Easily install and remove bed knife screws with the help of a ratchet with 3/8" drive. Tool manufactured with hardened alloy steel.:

## Other Parts Available

10	<b>R65-6270</b>	R119-4050	Bolt - Bed Bar	2	
----	-----------------	-----------	----------------	---	--

All original equipment manufacturers names and part numbers are used for identification purposes only, and we are in no way implying that our products are original equipment parts. Prices subject to change without notice.



# Replaces R&R Products Greens Max 2200D Parts

*Dual Adjust Cutting Unit  
Reel & Bedknife*



Item No	R&R Part No.	OEM Part No.	Description	Qty Req	Order Quantity
11	R32128-48		Locknut - 7/16-20 Flanged	2	
12	R52-2860	R119-4150	Washer - Bed Bar Pivot	4	
13	R52-2900		Washer - Nylon	4	
14	R63-9510	R63-9480	Bushing - Rubber For Bed Bar	2	
15	R52-2890		Bushing - Flanged	2	
16	R150176		Bed Bar - Fits R&R Units Only	1	
17	R150476	R170476, R3-3816, R52-4910, R57-4910	Screw - Bedknife 5/16-18 x 5/8	13	
18	R33025-00		Locknut - 10mm x 1.5 Jam	2	
19	R99-3755		Spring - Bed Bar Adjusting	2	
20	R99-2098		Washer - Bed Bar Adjuster	2	
21	R99-2096		Screw - Bed Bar Adjustment - M10 Thrd 1 End	2	
22	R106-5335		Wave Washer - Reel Adjusting	2	
23	R106-5344		Bushing - Flanged and Keyed	4	
24	R106-2619		Seal - Strip	1	
25	R105-5774		Bolt - Shoulder	4	
26	R98-0668		Nut - Whiz Lock	4	
27	R119-9303	R105-5799	Frame - Crossmember	1	
28	R99-2097		Detent - Bed Bar Adjuster	2	
29	R3255-8		Washer - Lock 5/16 Ext	2	
30	R33114-010		Bolt - Hex HD M8-1.25 x 10	2	

All original equipment manufacturers names and part numbers are used for identification purposes only, and we are in no way implying that our products are original equipment parts. Prices subject to change without notice.



# Replaces R&R Products Greens Max 2200D Parts

*Dual Adjust Cutting Unit  
Reel & Bedknife*



Item No	R&R Part No.	OEM Part No.	Description	Qty Req	Order Quantity
31	R106-6921	R106-5334, R114-4634	Shaft - Bed Bar Adjustment Assy	2	
31	R106-5363		Shaft - Adjusting - Bed Bar - Stainless	2	
32	R106-6924-03	R106-2617-03	Cut-Off Bar	1	
33	R110-3986	R48-8870, R56-6380	Screw - M6 x 1.0 x 20mm	4	
34	R33003-00	R65-7980	Hex Nut - Flanged 6-1.0mm	4	
35	R105-5711	R119-4165	Shim - Roller	2	
36	R105-5710	R119-4166	Spacer - Roller	2	
37	R105-5712	R119-4157	Retainer - Roller	2	
38	R106-2603		Bolt - Shoulder M6-1.0 x 45	4	
39	R106-2635		Screw - HOC 2-7/16	2	
39	R110-7352		Screw - HOC 2 5/8 Stainless	2	
40	R106-4668		Locknut - 10mm x 1.5 Top Lock	2	
41	R104-2603	R119-4158	Washer - HOC Bracket	2	
42	R150647	R105-5342	Plow Bolt - HOC - Front Roller	2	
43	R48-7610	R33113-012	Bolt - Hex HD Nyloc M6 x 12	2	
44	R99-3781		Bracket - Front Roller 5 Oal	2	
44	R107-3502		Bracket - Front Roller 5-1/4 Oal	2	
44	R110-7351		Bracket - High HOC - 5 1/4	2	
45	R106-6929		V-Ring - Reel	2	
46	R93-2489		Bearing - Reel	2	

All original equipment manufacturers names and part numbers are used for identification purposes only, and we are in no way implying that our products are original equipment parts. Prices subject to change without notice.



# Replaces R&R Products Greens Max 2200D Parts

*Dual Adjust Cutting Unit  
Reel & Bedknife*



Item No	R&R Part No.	OEM Part No.	Description	Qty Req	Order Quantity
47	R106-2607		O-Ring - Reel	1	
48	R106-6926		Inner Seal - Reel	2	
49	R94-4507		Coupling - Reel	1	
50	R106-6927		Speedi-Sleeve - Reel	2	
51	R105-5700	R115-5258	Wave Washer - Bearing	1	
52	R150485	R2410-30	Cap - Protective Bearing Housing	1	
53	R94-3559		Screw - Hex Socket Head	2	
54	R104-9447		Adapter - Motor	1	
56	R105-5706		Locknut - Reel	2	
57	R253-134		Outer Seal	2	
58	R105-5797G		Side Plate - RH - Fits R&R Units Only	1	
59	R105-5795G		Side Plate - LH - Fits R&R Units Only	1	
60	R106-6914	RSG427541	Snap Ring - Internal	1	
61	R105-5709		Weight	1	
62	R33114-040	R42-9530	Screw - Hh M8-1.25 x 40 CL8.8	2	
63	R105-5708	R121-4609	Plug - Expansion	1	
64	R70-1350		Spacer - 1/4 Fits Groomer Shaft	84	
65	R95-5719		Blade - Groomer	41	
66	R94-2958	R2411-7	Stud - Alloy Ball Joint	2	

All original equipment manufacturers names and part numbers are used for identification purposes only, and we are in no way implying that our products are original equipment parts. Prices subject to change without notice.



# Replaces R&R Products Greens Max 2200D Parts

*Dual Adjust Cutting Unit  
Reel & Bedknife*



Item No	R&R Part No.	OEM Part No.	Description	Qty Req	Order Quantity
67	R3254-6	446142, R01-166-0010, R01-166-0280, R01-166-0610, R12H304, R3253-5, R3254-18, R3290-223, R446140, R446142, R48-9370	Washer - Lock 3/8	2	
68	R105-5775		Retaining Ring - Reel Coupling	1	
69	R106-2633		Bolt - Hex Washer M10-1.5 x 16	2	
70	R32120-93		Snap Ring - HD	2	
71	R104-0532		Washer - Pulley	1	
72	R105-5740		Hook - Lift	1	
73	R33115-025	R48-7780	Bolt - Hex HD M10-1.5 x 25	2	
74	R106-2600G		Grass Shield	1	
75	R104-2628		Bolt - Hex Washer M6-1.0 x 12	2	
76	R33114-016	R19M7162, R42-9230, R42-9270, R48-7690, R48-7700	Bolt - Hx HD 8mm x 1.25 x 15	2	

All original equipment manufacturers names and part numbers are used for identification purposes only, and we are in no way implying that our products are original equipment parts. Prices subject to change without notice.





# Replaces R&R Products Greens Max 2200D Parts

*Dual Adjust Cutting Unit  
Reel & Bedknife*



Item No	R&R Part No.	OEM Part No.	Description	Qty Req	Order Quantity
77	R453009	3256-3, R01-166-0400, R24-10-BD, R24-9-AD, R24H1136, R32-9650, R3256-2, R3256-23, R3256-67, R3290-217, R3556-3, R4-2390, R452006, R7-0152	Washer - Flat 5/16 SAE	2	
78	R33024-00		Locknut - 8mm x 1.25	4	

All original equipment manufacturers names and part numbers are used for identification purposes only, and we are in no way implying that our products are original equipment parts. Prices subject to change without notice.