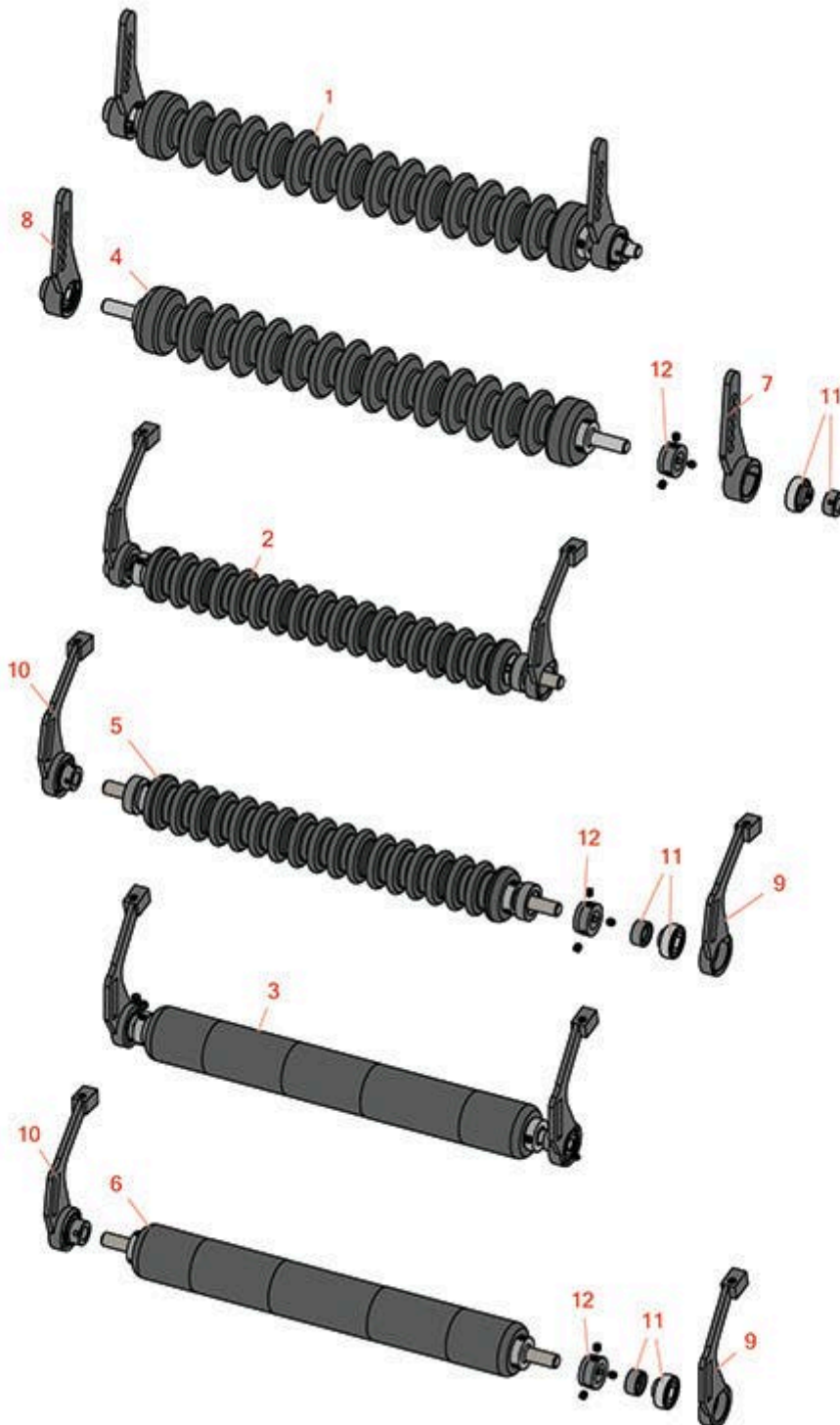




# Replaces Toro Reelmaster 5400D Parts

Cutting Unit - Model 03506 & 03509

Minuteman Roller System



All original equipment manufacturers names and part numbers are used for identification purposes only, and we are in no way implying that our products are original equipment parts. Prices subject to change without notice.



# Replaces Toro Reelmaster 5400D Parts

Cutting Unit - Model 03506 & 03509

Minuteman Roller System



Item No	R&R Part No.	OEM Part No.	Description	Qty Req	Order Quantity
---------	--------------	--------------	-------------	---------	----------------

## Complete Minuteman Roller Systems

1	<b>RMT1001</b>		Minuteman Front Grooved Roller System	0	
---	----------------	--	---------------------------------------	---	--

*Tech Note: Complete roller systems include roller and two brackets with bearings.:*

2	<b>RMT1002</b>		Minuteman Rear Grooved Roller System	0	
---	----------------	--	--------------------------------------	---	--

*Tech Note: Complete roller systems include roller and two brackets with bearings.:*

3	<b>RMT1003</b>		Minuteman Rear Smooth Roller System	0	
---	----------------	--	-------------------------------------	---	--

*Tech Note: Complete roller systems include roller and two brackets with bearings.:*

## Minuteman Rollers Only

4	<b>RM528</b>		Minuteman Grooved Roller Only	0	
---	--------------	--	-------------------------------	---	--

*Tech Note: Use with Minuteman Roller Bracket System Only:*

5	<b>RM519</b>		Minuteman Grooved Roller Only	0	
---	--------------	--	-------------------------------	---	--

*Tech Note: Use with Minuteman Roller Bracket System Only:*

6	<b>RM520</b>		Minuteman Smooth Roller Only	0	
---	--------------	--	------------------------------	---	--

*Tech Note: Use with Minuteman Roller Bracket System Only:*

## Other Parts Available

7	<b>RT121</b>		Bracket - Front LH	1	
---	--------------	--	--------------------	---	--

8	<b>RT122</b>		Bracket - Front RH	1	
---	--------------	--	--------------------	---	--

9	<b>RT131</b>		Bracket - Rear LH	1	
---	--------------	--	-------------------	---	--

10	<b>RTM132</b>		Bracket - Rear RH	1	
----	---------------	--	-------------------	---	--

11	<b>RMMB157</b>		Bearing w/Locking Collar	2	
----	----------------	--	--------------------------	---	--

12	<b>RMM3</b>		End Hub - 7/8 ID	2	
----	-------------	--	------------------	---	--

All original equipment manufacturers names and part numbers are used for identification purposes only, and we are in no way implying that our products are original equipment parts. Prices subject to change without notice.