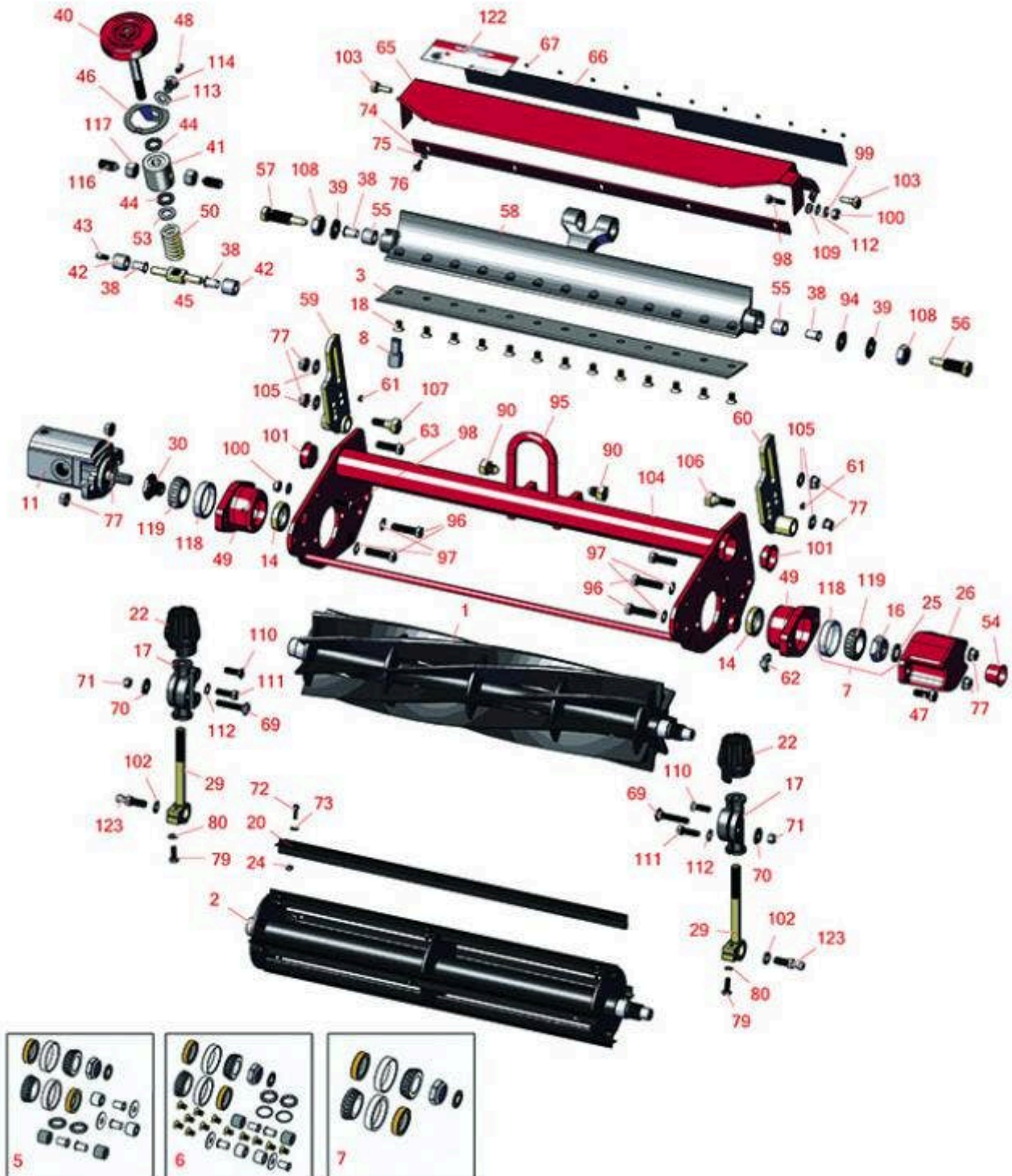




Replaces Toro Greensmaster 3000 Parts

SPA Cutting Unit - Models 04450 & 04468
Reel & Bedknife



All original equipment manufacturers names and part numbers are used for identification purposes only, and we are in no way implying that our products are original equipment parts. Prices subject to change without notice.



Replaces Toro Greensmaster 3000 Parts

SPA Cutting Unit - Models 04450 & 04468

Reel & Bedknife



| Item No | R&R Part No. | OEM Part No. | Description | Qty Req | Order Quantity |
|---|-----------------|---|---|---------|----------------|
| R&R Reels, Lifetime Guaranteed | | | | | |
| 1 | R150760 | | Reel - 14 Blade | 1 | |
| 1 | R12-2789 | 12-2789, 130-6470 | Reel - 11 Blade | 1 | |
| 1 | R5-3195 | 5-3195 | Reel - 9 Blade | 1 | |
| 1 | R5-3189 | 12-3599, 130-6469, 5-3189 | Reel - 8 Blade | 1 | |
| 1 | R5-3189H | | Reel - 8 Blade Heavy Duty | 1 | |
| 1 | R5-3206 | 5-3206 | Reel - 6 Blade | 1 | |
| 1 | R5-3205 | 12-0729, 12-8779, 5-3205 | Reel - 5 Blade | 1 | |
| 1 | R5-3215 | 5-3215 | Reel - 5 Blade Heavy Duty | 1 | |
| 1 | R5-3200 | 5-3200 | Reel - 4 Blade | 1 | |
| 2 | R150480 | | Brush Reel | 1 | |
| R&R Bedknives, Lifetime Guaranteed | | | | | |
| 3 | R150466 | 63-8600, 64-6393, 94-6393 | Bedknife - Super Thick .312 - 1.00 HOC | 1 | |
| 3 | R94-6392 | 62-2500, 94-6392 | Bedknife - High Cut .312 - 1.00 HOC | 1 | |
| 3 | R93-4264 | 57-4960, 63-8470, 93-4264 | Bedknife - Low Cut .187 - 1.00 HOC | 1 | |
| 3 | R93-4263 | 63-8560, 66-9320, 93-4263, 93-6039 | Bedknife - Tournament Cut .125 - .500 HOC | 1 | |

All original equipment manufacturers names and part numbers are used for identification purposes only, and we are in no way implying that our products are original equipment parts. Prices subject to change without notice.



Replaces Toro Greensmaster 3000 Parts

SPA Cutting Unit - Models 04450 & 04468
Reel & Bedknife



| Item No | R&R Part No. | OEM Part No. | Description | Qty Req | Order Quantity |
|---------|-----------------|--|--------------------------------------|---------|----------------|
| 3 | R93-4262 | 65-8250, 93-4262, 93-4263 | Bedknife - Micro Cut .062 - .187 HOC | 1 | |
| 3 | R94-6396 | 10-4900, 54-9150, 94-6396, Oct-00 | Bedknife - High Cut 5/16"-1" HOC | 1 | |

R&R Razor Tool Steel Bedknives

| | | | | | |
|---|------------------|----------|---|---|--|
| 3 | R115-1881 | 115-1881 | Bedknife - Razor Tool Steel - 21 Tournament Cut .125 - .500 HOC | 1 | |
|---|------------------|----------|---|---|--|

Tech Note: Razor Tool Steel Bedknives are constructed from high grade tool steel for extended life and optimum cut.:

| | | | | | |
|---|------------------|----------|--|---|--|
| 3 | R115-1880 | 115-1880 | Bedknife - Razor Tool Steel - 21 Micro Cut .062 - .187 HOC | 1 | |
|---|------------------|----------|--|---|--|

Tech Note: Razor Tool Steel Bedknives are constructed from high grade tool steel for extended life and optimum cut.:

Overhaul Kits & Service Tools

| | | | | | |
|---|-----------------|---------|-----------------------------|---|--|
| 5 | R255-310 | 255-310 | Overhaul Kit - Cutting Unit | 0 | |
|---|-----------------|---------|-----------------------------|---|--|

Tech Note: Includes 4 ea: R52-2890 Bushings; 2 ea: R237-77 O-Rings, R253-96 Seals, R254-72 Cups, R254-94 Bearings, R52-2900 Washers, R57-5280 Bearings, R62-5510 Bushings, R63-9510 Bushings; 1 ea: R253-61 Seal & R32127-46 Locknut:

| | | | | | |
|---|-----------------|---------|-----------------------------|---|--|
| 6 | R13-3659 | 13-3659 | Overhaul Kit - Cutting Unit | 1 | |
|---|-----------------|---------|-----------------------------|---|--|

Tech Note: Includes 13 ea.:R150477 Screws; 4 ea.: R52-2890 Bushings; 2 ea.: R237-77 O-rings, R253-96 Seals, R254-72 Bearing Cups, R254-94 Bearings, R52-2900 Washers, R57-5280 Bearings, R62-5510 Bushings, R63-9510 Bushings; 1 ea.: R253-61 Seal & R32127-46 Locknut:

| | | | | | |
|---|------------------|----------|-----------------------------|---|--|
| 7 | R107-1590 | 107-1590 | Overhaul Kit - Cutting Unit | 1 | |
|---|------------------|----------|-----------------------------|---|--|

Tech Note: Includes 2 ea.: R253-96 Seals, R254-72 Bearing Cups, R254-94 Bearings; 1 ea.: R253-61 Seal & R32127-46 Locknut:

| | | | | | |
|---|-----------------|---------|----------------------------|---|--|
| 8 | R51-0880 | 51-0880 | Bedknife Screw Driver Tool | 1 | |
|---|-----------------|---------|----------------------------|---|--|

Other Parts Available

All original equipment manufacturers names and part numbers are used for identification purposes only, and we are in no way implying that our products are original equipment parts. Prices subject to change without notice.



Replaces Toro Greensmaster 3000 Parts

SPA Cutting Unit - Models 04450 & 04468

Reel & Bedknife



| Item No | R&R Part No. | OEM Part No. | Description | Qty Req | Order Quantity |
|---------|------------------|--|--------------------------------------|---------|----------------|
| 11 | R120-2072 | 100-6426, 108-6487, 112-9200, 120-2072, 93-1375 | Hydraulic Gear Motor | 1 | |
| 11 | R105-9770 | 10-5090, 105-9770, 26-5690, 70-9800, 94-3506, 94-3507 | Hydraulic Motor - Reel Quick Release | 1 | |
| 14 | R253-96 | 253-96 | Seal - Oil Single Lip Reel | 2 | |
| 16 | R32127-46 | 32127-46, 3296-60 | Locknut | 1 | |
| 17 | R10-5060 | 10-5060 | Bracket - Roller Adj | 2 | |
| 18 | R150477 | 57-4910 | Screw - Bedknife 5/16-18 x 1/2 | 13 | |
| 18 | R119-4151 | 119-4151 | Screw - Bedknife 5/16-18 x 17/32 | 13 | |
| 18 | R150476 | 3-3816, 3-6462, 52-4910, 57-4910 | Screw - Bedknife 5/16-18 x 5/8 | 13 | |
| 20 | R150481 | | Brush Assy - Brush Reel | 4 | |
| 22 | R65-8600 | 10-5040, 65-8600 | Knob - Height Adjusting | 2 | |
| 24 | R3296-9 | 32127-17, 3296-9 | Locknut - Comb | 12 | |
| 25 | R253-61 | 253-61 | Seal - Oil Reel | 1 | |
| 26 | R10-5080 | 10-5080, 10-5080-01 | End - Cap Reel Brg Housing | 1 | |
| 29 | R10-5010 | 10-5010 | Screw - Roller Adjustment | 2 | |

All original equipment manufacturers names and part numbers are used for identification purposes only, and we are in no way implying that our products are original equipment parts. Prices subject to change without notice.



Replaces Toro Greensmaster 3000 Parts

SPA Cutting Unit - Models 04450 & 04468

Reel & Bedknife



| Item No | R&R Part No. | OEM Part No. | Description | Qty Req | Order Quantity |
|---------|------------------|--|-------------------------------------|---------|----------------|
| 29 | R65-9500 | 65-9500 | Screw - Roller Adjusting - High Cut | 2 | |
| 30 | R93-1394 | 93-1394 | Nut - Splined RH Thrd .812 Long | 1 | |
| 38 | R52-2890 | 52-2890 | Bushing - Flanged | 4 | |
| 39 | R52-2900 | 52-2900 | Washer - Nylon | 2 | |
| 40 | R77-0300 | 77-0300, 77-0300-01 | Handle Assy | 1 | |
| 41 | R77-0330 | 77-0330 | Housing - Pivot Spa | 1 | |
| 42 | R62-5510 | 52-2870, 62-5510 | Bushing | 4 | |
| 43 | R302-18 | 302-18 | Zerk - Grease Press Style | 2 | |
| 44 | R77-0350 | 77-0350 | Retainer - Bearing | 2 | |
| 45 | R57-5260 | 107-7409, 57-5260 | Pivot - 1/2-20 - Bed Bar | 1 | |
| 46 | R66-7220 | 66-7220 | Arm - Spring Handle Assy | 1 | |
| 47 | R323-2 | 01-178-0604, 323-2 | Bolt - Hex HD 3/8-16 x 1 | 1 | |
| 48 | R302-5 | 21-6010, 302-11, 302-37, 302-47, 302-5, 302-57, 302-58, 302-6, 31-0300, 32-9660, 60-0800, 62-3880, 92-4181 | Fitting - Grease | 1 | |
| 49 | R104-3399 | 104-3399 | Housing Assy - Bearing Reel | 2 | |

All original equipment manufacturers names and part numbers are used for identification purposes only, and we are in no way implying that our products are original equipment parts. Prices subject to change without notice.



Replaces Toro Greensmaster 3000 Parts

SPA Cutting Unit - Models 04450 & 04468

Reel & Bedknife



| Item No | R&R Part No. | OEM Part No. | Description | Qty Req | Order Quantity |
|---------|-----------------|--|-------------------------------|---------|----------------|
| 50 | R66-7230 | 66-7230 | Spring - Compression | 1 | |
| 53 | R257-5 | 257-5 | Washer - Thrust | 2 | |
| 54 | R12-0460 | 12-0460 | Caplug - End Cap | 1 | |
| 55 | R63-9510 | 63-9480, 63-9510 | Bushing - Rubber For Bed Bar | 2 | |
| 56 | R52-2910 | 52-2910 | Bolt - Eccentric Bed Bar | 1 | |
| 57 | R52-2930 | 52-2930 | Bolt - Bed Bar | 1 | |
| 58 | R57-4940 | 52-2780, 57-4940, 57-4940-01 | Bed Bar - 13 Hole | 1 | |
| 59 | R52-3060 | 52-3060, 77-1060, 99-5653 | Bracket - RH Rear Roller | 1 | |
| 60 | R52-3090 | 52-3090, 77-1080, 99-5654 | Bracket - LH Rear Roller | 1 | |
| 61 | R415521 | 32-113-AHNC, 32137-1, 3246-2, 909862P | Screw - Set - 5/16-18 x 3/8 | 2 | |
| 62 | R302-40 | 302-13, 302-40 | Fitting - Grease | 1 | |
| 63 | R52-3110 | 52-3110 | Bolt - Shoulder HOC RH | 1 | |
| 65 | R57-5200 | 57-5200 | Shield - Grass | 1 | |
| 66 | R57-5210 | 57-5210 | Deflector - Styrene | 1 | |
| 67 | R3295-46 | 3295-46 | Tube - Rivet Smi Grass Shield | 13 | |

All original equipment manufacturers names and part numbers are used for identification purposes only, and we are in no way implying that our products are original equipment parts. Prices subject to change without notice.



Replaces Toro Greensmaster 3000 Parts

SPA Cutting Unit - Models 04450 & 04468

Reel & Bedknife



| Item No | R&R Part No. | OEM Part No. | Description | Qty Req | Order Quantity |
|---------|------------------|--|----------------------------------|---------|----------------|
| 69 | R441674 | 01-173-0514, 01-173-0516, 3-7253, 3230-5 | Screw - 5/16-18 x 1-3/4 Carriage | 2 | |
| 70 | R310266 | 3256-23, 3256-3, 3556-3 | Washer - Flat 5/16 USS | 2 | |
| 70 | R453009 | 01-166-0400, 24-10-BD, 24-9-AD, 32-9650, 3256-2, 3256-23, 3256-3, 3256-67, 3290-217, 3556-3, 4-2390, 7-0152 | Washer - Flat 5/16 SAE | 2 | |
| 71 | R32153-3 | 119-4038, 22-12-AJFD, 32127-35, 32146-5, 32153-3, 3296-18, 3296-29, 3296-31, N/A | Locknut - 5/16-18 ESNA Zinc | 2 | |
| 72 | R150425 | | Bolt - Hex HD 8-32 x 5/8 | 12 | |
| 73 | R150426 | 3256-21 | Washer - 8 SAE | 12 | |
| 74 | R36-7260 | 36-7260 | Bar - Cut Off Grass Shield | 1 | |
| 75 | R3256-14 | 24-7-BD, 32125-2, 3256-14, 3256-51, 51-2170 | Washer - 10 Flat | 5 | |
| 76 | R32144-73 | 104-2065, 32144-73 | Screw - Machine Hex Washer Head | 5 | |

All original equipment manufacturers names and part numbers are used for identification purposes only, and we are in no way implying that our products are original equipment parts. Prices subject to change without notice.



Replaces Toro Greensmaster 3000 Parts

SPA Cutting Unit - Models 04450 & 04468

Reel & Bedknife



| Item No | R&R Part No. | OEM Part No. | Description | Qty Req | Order Quantity |
|---------|--------------|--|-------------------------------|---------|----------------|
| 77 | R3296-39 | 32127-25, 32128-36, 3290-357, 3296-17, 3296-22, 3296-39, 915663P, 99-7443 | Locknut - 3/8-16 Nylon | 2 | |
| 79 | R321-4 | 01-150-1030, 01-178-0406, 20-3-AGD, 321-4, 3222-1 | Bolt - Hex HD 1/4-20 x 3/4 | 4 | |
| 80 | R3253-3 | 01-166-0070, 01-166-0410, 23-9-GD, 24-7150, 3253-3, 3256-1, 352-167 | Washer - Lock 1/4 | 4 | |
| 90 | R66-7240 | 66-7240 | Bolt - Single Point Adjust. | 2 | |
| 94 | R52-2860 | 119-4150, 52-2860 | Washer - Bed Bar Pivot | 1 | |
| 95 | R70-1200 | 70-1200, 70-1200-01 | Frame - Single Point Adj. | 1 | |
| 96 | R3290-316 | 3290-316, 57-3210 | Bolt - Hex Tap 3/8-16 x 1-1/2 | 4 | |
| 97 | R3255-9 | 3255-9 | Washer - Lock 3/8 Ext. Star | 4 | |
| 98 | R321-5 | 321-31, 321-5 | Bolt - Hex HD 1/4-20 x 7/8 | 2 | |
| 99 | R3256-22 | 24-9-BD, 3-1032, 3256-1, 3256-22, 93-0954, 93-0989 | Washer - Flat 1/4 Yellow | 4 | |

All original equipment manufacturers names and part numbers are used for identification purposes only, and we are in no way implying that our products are original equipment parts. Prices subject to change without notice.



Replaces Toro Greensmaster 3000 Parts

SPA Cutting Unit - Models 04450 & 04468

Reel & Bedknife



| Item No | R&R Part No. | OEM Part No. | Description | Qty Req | Order Quantity |
|---------|-----------------|---|------------------------------|---------|----------------|
| 100 | R301504 | 2296-42, 301504, 32127-24, 32128-33, 32146-17, 3296-16, 3296-42, 3296-42 , 915661P | Locknut - ESNA 1/4-20 | 2 | |
| 101 | R285-14 | 285-14 | Plug - Pipe Frame | 2 | |
| 102 | R3254-6 | 01-166-0010, 01-166-0280, 01-166-0610, 3253-5, 3254-18, 3254-6, 3290-223, 48-9370 | Washer - Lock 3/8 | 2 | |
| 103 | R57-9910 | 57-9910 | Bolt - Pivot | 2 | |
| 104 | R400264 | 01-150-0180, 01-178-0610, 20-48-AD, 20-48-AGD, 32-9160, 3224-3, 323-29, 323-7, 400264, 908035P | Bolt - Hex HD 3/8-16 x 1-1/4 | 2 | |

All original equipment manufacturers names and part numbers are used for identification purposes only, and we are in no way implying that our products are original equipment parts. Prices subject to change without notice.



Replaces Toro Greensmaster 3000 Parts

SPA Cutting Unit - Models 04450 & 04468

Reel & Bedknife



| Item No | R&R Part No. | OEM Part No. | Description | Qty Req | Order Quantity |
|---------|------------------|--|------------------------------|---------|----------------|
| 105 | R453011 | 01-166-0100, 01-166-0120, 01-166-0270, 01-166-0500, 01-166-0600, 01-166-0620, 132-4593, 2356-3, 237-12, 24-10-AD, 24-11-AD, 24-11-BD, 24-12-AD, 24-12-BD, 30-9310, 32-8190, 3256-24, 3256-3, 3256-36, 3256-4, 453011, 47-9950, 48-9220, 513458, 7-0052 | Washer - Flat 3/8 SAE Y/Zinc | 4 | |
| 106 | R52-3100 | 52-3100 | Bolt - Eccentric Shoulder LH | 1 | |
| 108 | R443828 | 01-191-1018, 3214, 3220-6, 443828, 915089P | Nut - 5/8-18 Hex | 2 | |
| 109 | R237-84 | 237-84 | Grommet - Rubber | 2 | |
| 110 | R32108-20 | 32108-20 | Screw - Flat HD Cntrsunk | 2 | |
| 111 | R322-5 | 01-178-0508, 20-26-AD, 20-26-AGD, 30-9000, 322-5, 513341, 519755, 908019P, N/A | Bolt - Hex HD 5/16-18 x 1 | 2 | |

All original equipment manufacturers names and part numbers are used for identification purposes only, and we are in no way implying that our products are original equipment parts. Prices subject to change without notice.



Replaces Toro Greensmaster 3000 Parts

SPA Cutting Unit - Models 04450 & 04468

Reel & Bedknife



| Item No | R&R Part No. | OEM Part No. | Description | Qty Req | Order Quantity |
|---------|-----------------|--|---------------------------|---------|----------------|
| 112 | R3255-8 | 3255-8 | Washer - Lock 5/16 Ext | 2 | |
| 113 | R187-0 | 3256-25, 7-0032 | Washer - Flat 7/16 SAE | 1 | |
| 114 | R52-2990 | 324-25, 52-2990 | Bolt - Spring Retainer | 1 | |
| 116 | R57-5190 | 32110-19, 57-5190 | Screw - Adjusting | 2 | |
| 117 | R443818 | 01-191-0813, 3218-18, 3218-5, 3248-18 | Nut - 1/2-13 Hex Jam Zinc | 2 | |
| 118 | R254-72 | 01-103-0050, 01-103-0120, 01-103-0140, 1-543508, 254-71, 254-72, 40439, 62-3340, 99-4511 | Cup - Bearing | 2 | |
| 119 | R254-94 | 1-543509, 254-94, 32-8090, 32-8240, 32-9640, 40440, 62-3330 | Tapered Bearing Cone | 2 | |
| 122 | R354083 | 104-7729, 354083 | Decal - Danger | 1 | |
| 123 | R94-2958 | 94-2958 | Stud - Alloy Ball Joint | 2 | |

All original equipment manufacturers names and part numbers are used for identification purposes only, and we are in no way implying that our products are original equipment parts. Prices subject to change without notice.