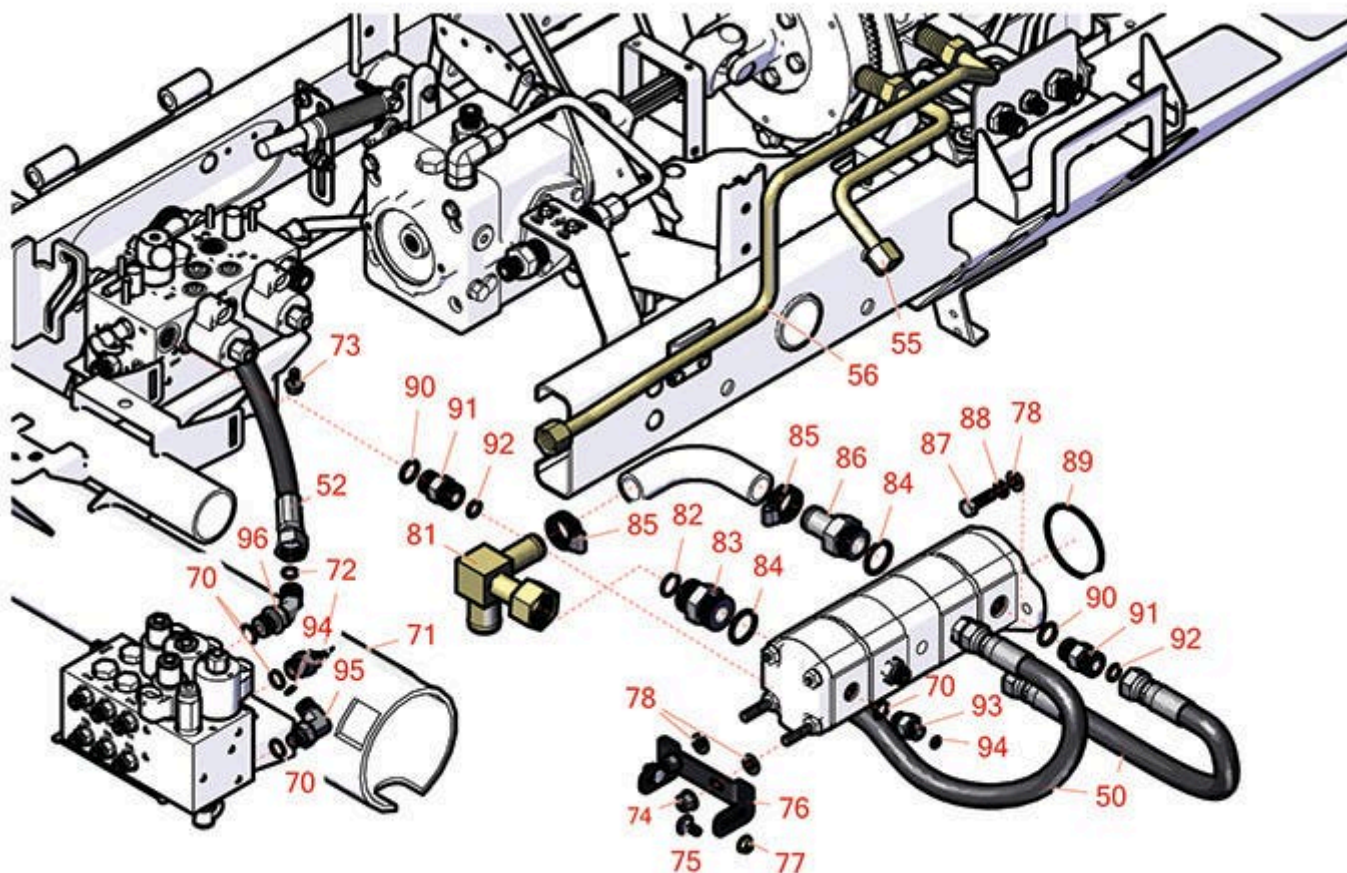




Replaces Toro Reelmaster 5510-D Parts

*Traction Unit with Yanmar Engine - Models
Gear Pump & Hydraulics*



All original equipment manufacturers names and part numbers are used for identification purposes only, and we are in no way implying that our products are original equipment parts. Prices subject to change without notice.



Replaces Toro Reelmaster 5510-D Parts

*Traction Unit with Yanmar Engine - Models
Gear Pump & Hydraulics*



| Item No | R&R Part No. | OEM Part No. | Description | Qty Req | Order Quantity |
|------------------------------|---------------------|--|------------------------------------|---------|----------------|
| Hoses | | | | | |
| 50 | R108-1686 | 108-1686 | Hydraulic Hose Assy | 1 | |
| 52 | R117-0180 | 117-0180 | Hydraulic Hose Assy | 1 | |
| 55 | R117-0140 | 117-0140 | Tube Assy | 1 | |
| 56 | R117-0141 | 117-0141 | Tube Assy | 1 | |
| Other Parts Available | | | | | |
| 70 | R237-79 | 237-79 | O-Ring | 3 | |
| 71 | R340-4 | 340-4 | Hydraulic Fitting - Male Connector | 1 | |
| 72 | R237-30 | 23-6320, 237-30 | O-Ring - Seal | 1 | |
| 73 | R3234-14 | 3234-14, 3234-23 | Bolt - Hex Serrated Washer HD | 2 | |
| 74 | R103-9511 | 103-9511 | Nut - Lock | 2 | |
| 75 | R3230-1 | 01-173-0506, 3230-1, 3230-20, 900037P | Bolt - Carriage 5/16-18 x 3/4 | 2 | |
| 76 | R108-1801-01 | 108-1801-01 | Bracket-Support - Pump | 1 | |
| 77 | R104-8300 | 104-8300, 104-8300 , 119-4041 | Locknut - 5/16-18 Flanged Y/Zinc | 2 | |

All original equipment manufacturers names and part numbers are used for identification purposes only, and we are in no way implying that our products are original equipment parts. Prices subject to change without notice.



Replaces Toro Reelmaster 5510-D Parts

Traction Unit with Yanmar Engine - Models
Gear Pump & Hydraulics



| Item No | R&R Part No. | OEM Part No. | Description | Qty Req | Order Quantity |
|---------|--------------|--|-------------------------------|---------|----------------|
| 78 | R453011 | 01-166-0100, 01-166-0120, 01-166-0270, 01-166-0500, 01-166-0600, 01-166-0620, 132-4593, 2356-3, 237-12, 24-10-AD, 24-11-AD, 24-11-BD, 24-12-AD, 24-12-BD, 30-9310, 32-8190, 3256-24, 3256-3, 3256-36, 3256-4, 453011, 47-9950, 48-9220, 513458, 7-0052 | Washer - Flat 3/8 SAE Y/Zinc | 4 | |
| 81 | R108-1672 | 108-1672 | Manifold-Tube | 1 | |
| 82 | R340-65 | 340-65 | O-Ring | 1 | |
| 83 | R104-3797 | 104-3797 | Hydraulic Fitting - Striaight | 1 | |
| 84 | R237-146 | 237-146, 340-146 | O-Ring | 2 | |
| 85 | R2412-34 | 2412-34, 31-0120 | Clamp - Hose .75-1.5 | 1 | |

Detail Description: Stainless steel hose clamp with 5/16" slotted hex head, heat treated carbon steel, plated with zinc plus trivalent chromate for long lasting protection.:

All original equipment manufacturers names and part numbers are used for identification purposes only, and we are in no way implying that our products are original equipment parts. Prices subject to change without notice.



Replaces Toro Reelmaster 5510-D Parts

Traction Unit with Yanmar Engine - Models
Gear Pump & Hydraulics



| Item No | R&R Part No. | OEM Part No. | Description | Qty Req | Order Quantity |
|--|-----------------|--|--|---------|----------------|
| 85 | RG116 | 2412-34, 31-0120, 94-3188, 94-3189, 94-3193, 94-3203, 94-3204 | Clamp - Hose 3/4" x 1-1/2" - Box/10 | 2 | |
| <i>Detail Description: Stainless steel hose clamps with 5/16" slotted hex head, heat treated carbon steel, plated with zinc plus trivalent chromate for long lasting protection. Good general-purpose clamp. Box of 10.:</i> | | | | | |
| 86 | R354-78 | 354-78 | Connector-Hose | 1 | |
| 87 | R3274-1 | 3274-1 | Bolt - 3/8-16 x 1 1/4 Soc HD Cap | 2 | |
| 88 | R3254-6 | 01-166-0010, 01-166-0280, 01-166-0610, 3253-5, 3254-18, 3254-6, 3290-223, 48-9370 | Washer - Lock 3/8 | 2 | |
| 89 | R237-161 | 237-161 | O-Ring | 1 | |
| 90 | R237-80 | 237-80, 327-80 | O-Ring | 4 | |
| 91 | R340-7 | 340-7 | Adapter | 4 | |
| 92 | R237-65 | 237-65, 237.65 | O-Ring | 4 | |
| 93 | R340-3 | 340-3 | Hydraulic Fitting - Adapter Connector | 2 | |
| 94 | R237-22 | 107-8844, 237-22, 237-78 | O-Ring | 4 | |
| 95 | R340-18 | 340-18 | Hydraulic Fitting | 1 | |
| 96 | R340-101 | 340-101 | Hydraulic Fitting | 1 | |

All original equipment manufacturers names and part numbers are used for identification purposes only, and we are in no way implying that our products are original equipment parts. Prices subject to change without notice.



Replaces Toro Reelmaster 5510-D Parts

*Traction Unit with Yanmar Engine - Models
Gear Pump & Hydraulics*



All original equipment manufacturers names and part numbers are used for identification purposes only, and we are in no way implying that our products are original equipment parts. Prices subject to change without notice.