

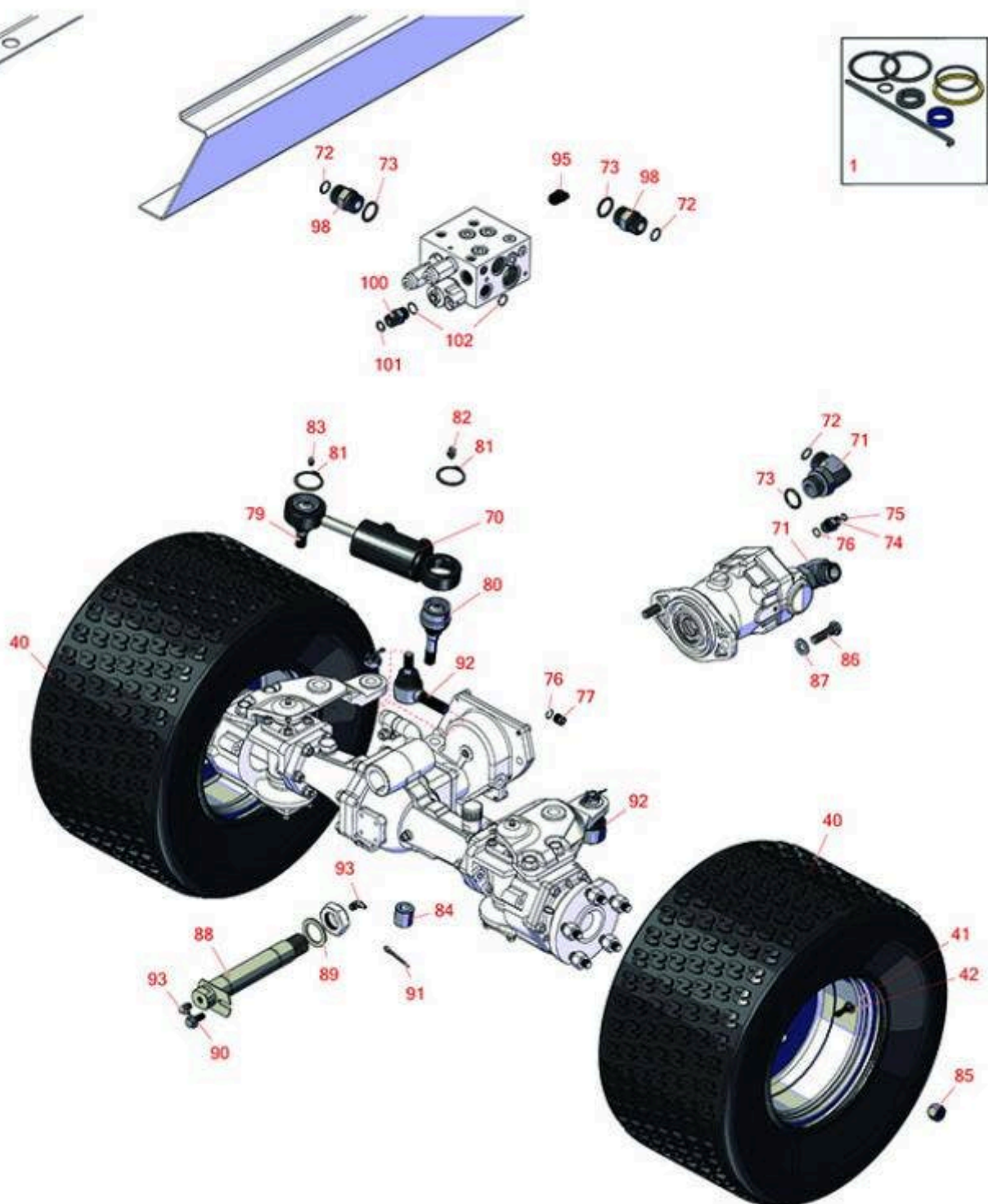


# Replaces Toro Groundsmaster 4100-D

## Parts

Rotary Mower - Model 30449

Rear Wheels



All original equipment manufacturers names and part numbers are used for identification purposes only, and we are in no way implying that our products are original equipment parts. Prices subject to change without notice.



# Replaces Toro Groundsmaster 4100-D Parts

Rotary Mower - Model 30449  
Rear Wheels



Item No	R&R Part No.	OEM Part No.	Description	Qty Req	Order Quantity
---------	--------------	--------------	-------------	---------	----------------

## Overhaul Kits

1	R107-0245	107-0245	Seal Kit - Fits R105-0775 Hyd Cyl	1	
---	-----------	----------	-----------------------------------	---	--

## Tires & Wheels

40	RCT6L07411		Tire - 20x10-10 6 Ply Turf Master	2	
----	------------	--	-----------------------------------	---	--

*Detail Description: The Carlisle Turf Master tire is a professional-grade tire known for its durability, stability, and traction. With its contoured shoulder protection, deep tread lugs, and durable compound, the Turf Master tire delivers reliable performance for ZTRs and professional-grade mowers. Whether you're maintaining a large lawn or operating a commercial landscaping business, the Turf Master tire is designed to meet your high standards and exceed your expectations.:*

41	R100-2582	100-2582, 120-8909, 217-120, 217-125	Rim - Rear Tire 10 x 7	2	
----	-----------	---	------------------------	---	--

42	R232-27	232-27, 232-31	Stem - Valve w/ Cap	2	
----	---------	-------------------	---------------------	---	--

## Other Parts Available

70	R105-0775	105-0775	Steering Cylinder	1	
----	-----------	----------	-------------------	---	--

71	R340-142	340-142, 95-1692	Hydraulic Fitting - 90 Deg	2	
----	----------	---------------------	----------------------------	---	--

72	R237-58	237-58	O-Ring	3	
----	---------	--------	--------	---	--

73	R237-81	237-81, 237.81, 327-81	O-Ring	3	
----	---------	------------------------------	--------	---	--

74	R340-2	340-2, 60-1920	Hydraulic Fitting - Striaight	1	
----	--------	-------------------	-------------------------------	---	--

75	R237-22	107-8844, 237-22, 237-78	O-Ring	2	
----	---------	--------------------------------	--------	---	--

All original equipment manufacturers names and part numbers are used for identification purposes only, and we are in no way implying that our products are original equipment parts. Prices subject to change without notice.



# Replaces Toro Groundsmaster 4100-D Parts

Rotary Mower - Model 30449  
Rear Wheels



Item No	R&R Part No.	OEM Part No.	Description	Qty Req	Order Quantity
76	<b>R237-42</b>	237-42, 31-4160	O-Ring	2	
77	<b>R353-989</b>	353-989	Plug - Hex - Hollow	1	
79	<b>R106-6774</b>	106-6774, 92-5838, 92-5838-01	Ball Joint	1	
80	<b>R100-3795</b>	100-3795	Ball Joint	1	
81	<b>R32151-104</b>	32151-104	Ring - Retaining, Ex	2	
82	<b>R302-60</b>	302-60	Zerk - Grease 90 Deg.	1	
83	<b>R302-5</b>	21-6010, 302-11, 302-37, 302-47, 302-5, 302-57, 302-58, 302-6, 31-0300, 32-9660, 60-0800, 62-3880, 92-4181	Fitting - Grease	2	
84	<b>R100-3796</b>	100-3796	Spacer - Ball Joint	1	
85	<b>R242-50</b>	242-50	Nut - 1/2-20 Wheel	10	
86	<b>R325-7</b>	01-150-0380, 01-178-0814, 3226-3, 325-7, 48-9490	Bolt - 1/2-13 x 1 3/4 Hex HD Gr 5	2	

All original equipment manufacturers names and part numbers are used for identification purposes only, and we are in no way implying that our products are original equipment parts. Prices subject to change without notice.



# Replaces Toro Groundsmaster 4100-D Parts

Rotary Mower - Model 30449  
Rear Wheels



Item No	R&R Part No.	OEM Part No.	Description	Qty Req	Order Quantity
87	R3256-26	01-166-0540, 01-166-0820, 17-2530, 24-13-BD, 30-8570, 3256-26, 356206, 48-9390	Washer - 1/2 in	2	
88	R98-7077	98-7077	Axle Pin - Rear	2	
89	R92-1765	92-1765	Washer - Thrust	1	
90	R32144-14	32104-32, 32104-49, 32144-14	Bolt - Hex Washer 5/16-18 x 5/8	1	
91	R3272-12	01-151-0090, 28-19-D, 3272-12	Pin - Cotter 1/8 x 1-1/4	1	
92	R106-1113	100-3852, 106-1113	Tie Rod End Assy RH Thread	2	
93	R323016	302-33, 323016	1/8"-NPT 90 Degree Grease Fitting	2	
95	R354-79	354-79	Cap-Dust	1	
98	R340-9	340-9	Fitting - Straight Connector	2	
100	R340-4	340-4	Hydraulic Fitting - Male Connector	1	
101	R237-30	23-6320, 237-30	O-Ring - Seal	1	
102	R237-79	237-79	O-Ring	2	

All original equipment manufacturers names and part numbers are used for identification purposes only, and we are in no way implying that our products are original equipment parts. Prices subject to change without notice.